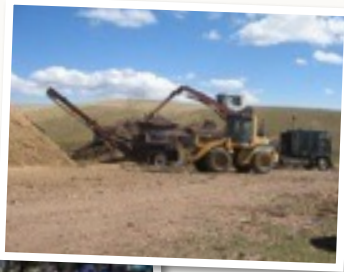


SAFE FORESTS — SAFE COMMUNITIES

Not only does defensible space surrounding your home protect your own property, when created with your neighbors, defensible space helps protect your community, your forests and your watershed.



Bring your slash from thinning to the Slash Collection Site

Protect your community!

Location: *From Conifer go south on Hwy 285, take CR 72 exit, cross under Hwy to site on left across parking lot.*

From Bailey go north on 285 to top of Crow Hill, take CR 72 exit, turn left to site on right.

Fee: *Park County Residents: \$15.00 per load of slash (a load is considered equivalent to a pickup bed full)*
All Others: \$20.00 per load

Mulch: *Free when available (load yourself)*



BEFORE Fuels Reduction

AFTER Fuels Reduction

Homeowners can take a number of steps to protect their property and help alleviate the spread of wildland fires. Preventative measures include clearing excess fuel, creating defensible space around their homes and using FireWise practices. Due to Colorado's arid climate and fire-dependent forests, many homeowners and landowners may be particularly vulnerable to wildfires. It is important to keep this threat in mind when buying or building a

home. Fire is unpredictable. If there are weaknesses in your home's fire protection scheme, fire can gain the upper hand because of some overlooked or seemingly inconsequential factor. By creating a wildfire defensible zone, homes are less vulnerable from this naturally occurring phenomenon and the chance of spreading wildfires is greatly reduced*.

* Source: <http://csfs.colostate.edu/pages/wf-protection.html>